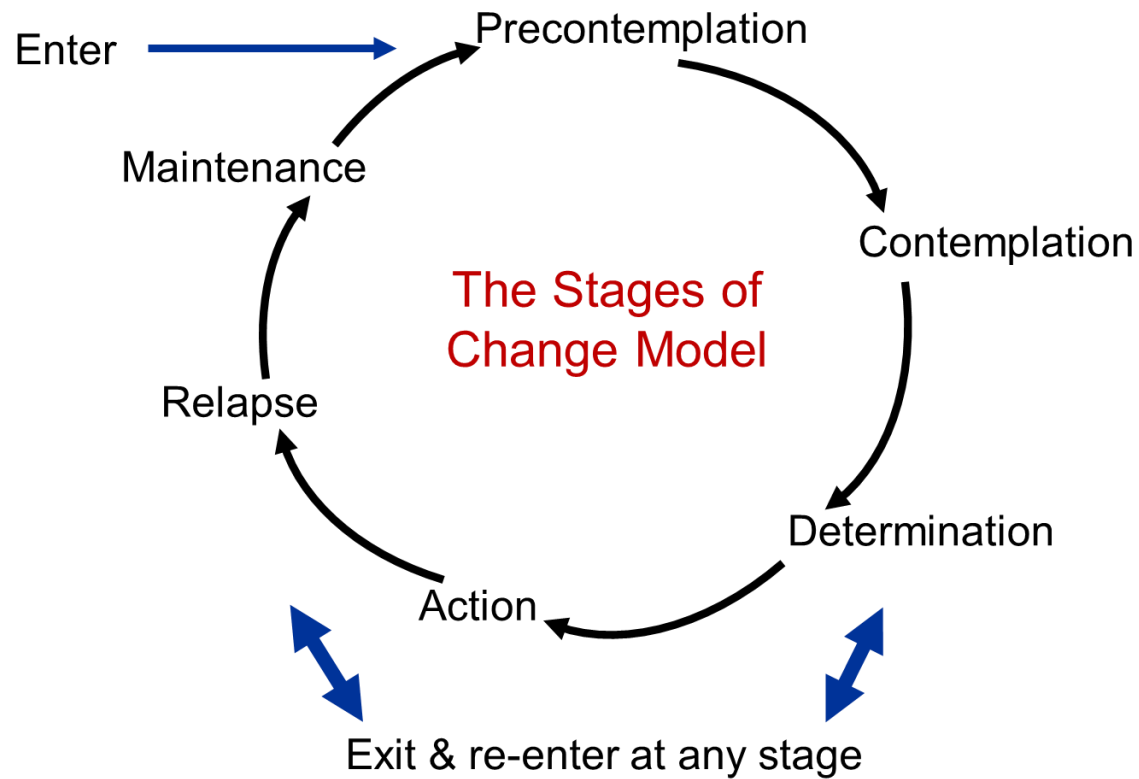


Stages of Change: Moving from Contemplation to Action in the Opiate Epidemic

Jennifer Walthall, MD MPH
Secretary, Indiana Family and Social
Services Administration

Stages of Change



Action #1: Data!



Action #2: 21st Century Cures

- ▶ Expansion of treatment capacity
- ▶ ECHO
- ▶ Mobile Treatment Teams
- ▶ Naloxone
- ▶ NAS pilots
- ▶ ED Peer Recovery

Action #3: HIP SUD waiver

- ▶ Expanded inpatient detoxification;
- ▶ Residential treatment services; and
- ▶ Addiction recovery support services, which includes (i) recovery education; (ii) peer recovery support services; (iii) housing support services; (iv) recovery focused case management; and (v) relapse prevention services.
- ▶ Waiver of current IMD exclusion

Action #4: Build the toolkit

- ▶ Methadone bundling policy
- ▶ MAT streamlining and practice guidance
- ▶ INSPECT integration into workflow
- ▶ OTP expansion
- ▶ Prescriber rules
- ▶ Recovery Works
- ▶ Hepatitis C and HIV resources
- ▶ Syringe exchange programs

Action #5: Partnerships!

- ▶ Law enforcement

- ▶ HORT
- ▶ Naloxone
- ▶ Drug courts

- ▶ Jail system

- ▶ Faith based community

- ▶ HHS Toolkit

- ▶ Elected officials

- ▶ Health care providers

- ▶ Physicians
- ▶ Nurses
- ▶ Dentists
- ▶ Pharmacists
- ▶ Advanced practitioners
- ▶ Hospitals

- ▶ Communities

- ▶ Research

What can employers do?

- ▶ Take back programs
- ▶ Workplace education and support
- ▶ Stigma reduction
- ▶ Talk about it

education

```
graph TD; A[education] --> B[understanding]; B --> C[empathy]; C --> D[hope]; D --> E[recovery];
```

understanding

empathy

hope

recovery

- 1. OUD is a disease.**
- 2. There is treatment.**
- 3. Recovery is possible.**

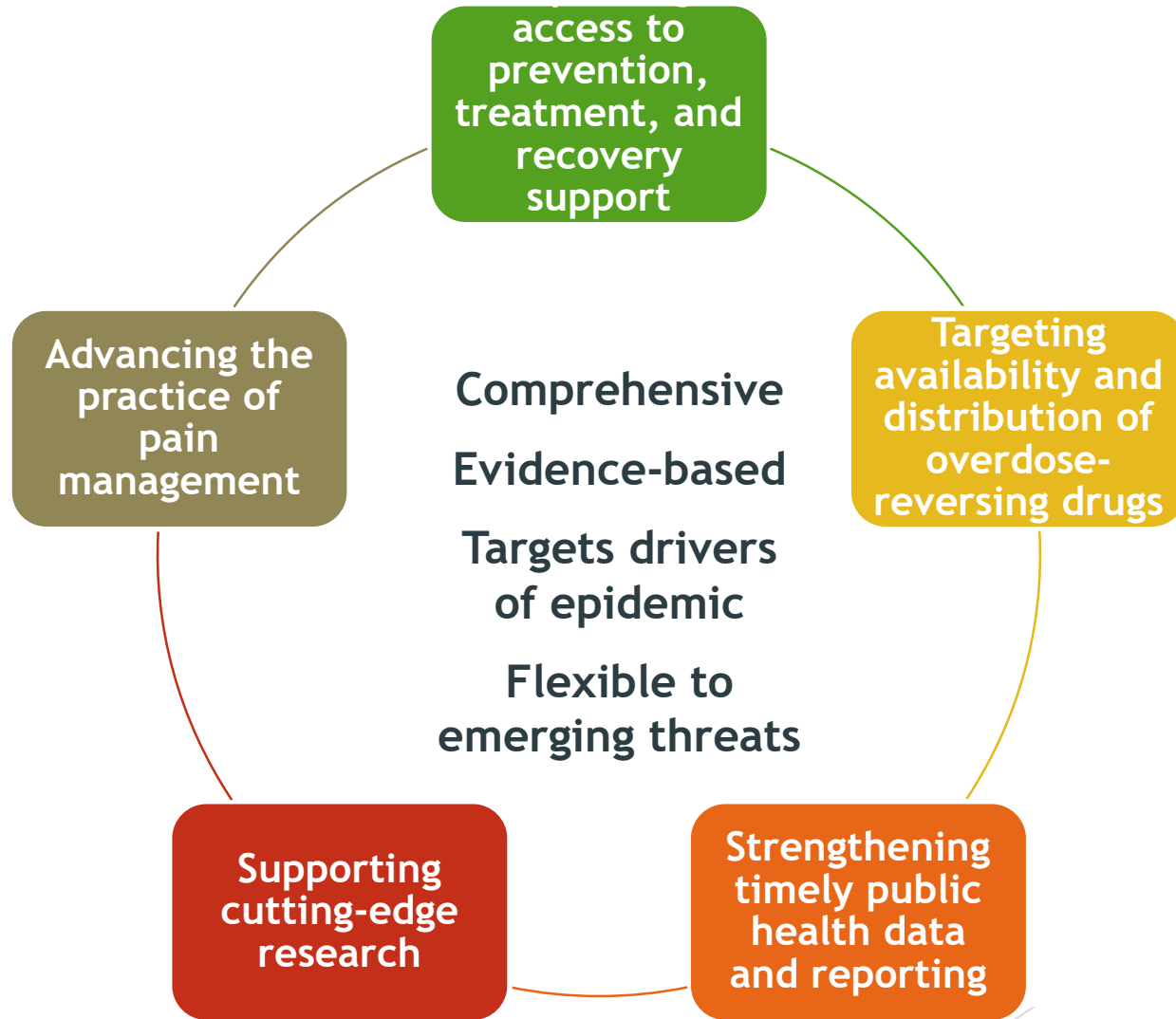


why believe?

Know The **O** Campaign

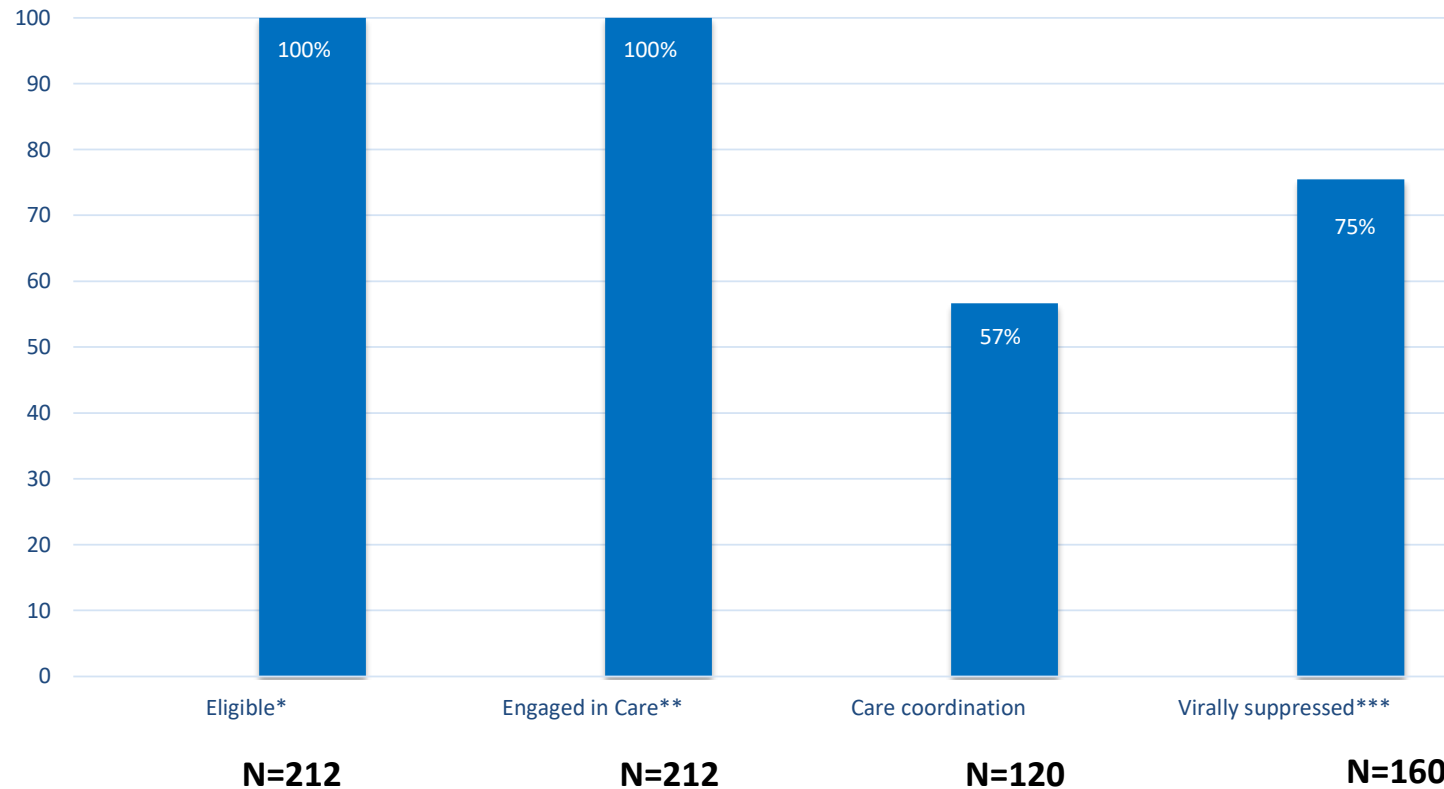


HHS Opioid Strategy



Continuum of HIV care in Austin, Indiana

August 17, 2017



Total diagnosed=223 (223 confirmed). Persons were ineligible if deceased (n=7) or outside of the jurisdiction (n=4); estimates are based on the number of eligible persons (n=212); ** Patients engaged in care if have at least one VL or CD4 *** Percent virally suppressed is stable at 75% when denominator changed to number engaged in care. Clinical services were initiated 3/31/15.

Contemplation becomes Action

- ▶ Predictive analytics
- ▶ Implementation teams
- ▶ Rapid response government
- ▶ Multi-sector ownership
- ▶ Data transparency
- ▶ People-centered metrics

“The world is indeed full of peril, and in it there are many dark places; but still there is much that is fair, and though in all lands love is now mingled with grief, it grows perhaps the greater.”

