

Indiana Medicaid Payer Mix & Medicaid Operating Profit Margin Compared to other States

Prepared by the Employers' Forum of Indiana

April 7, 2023

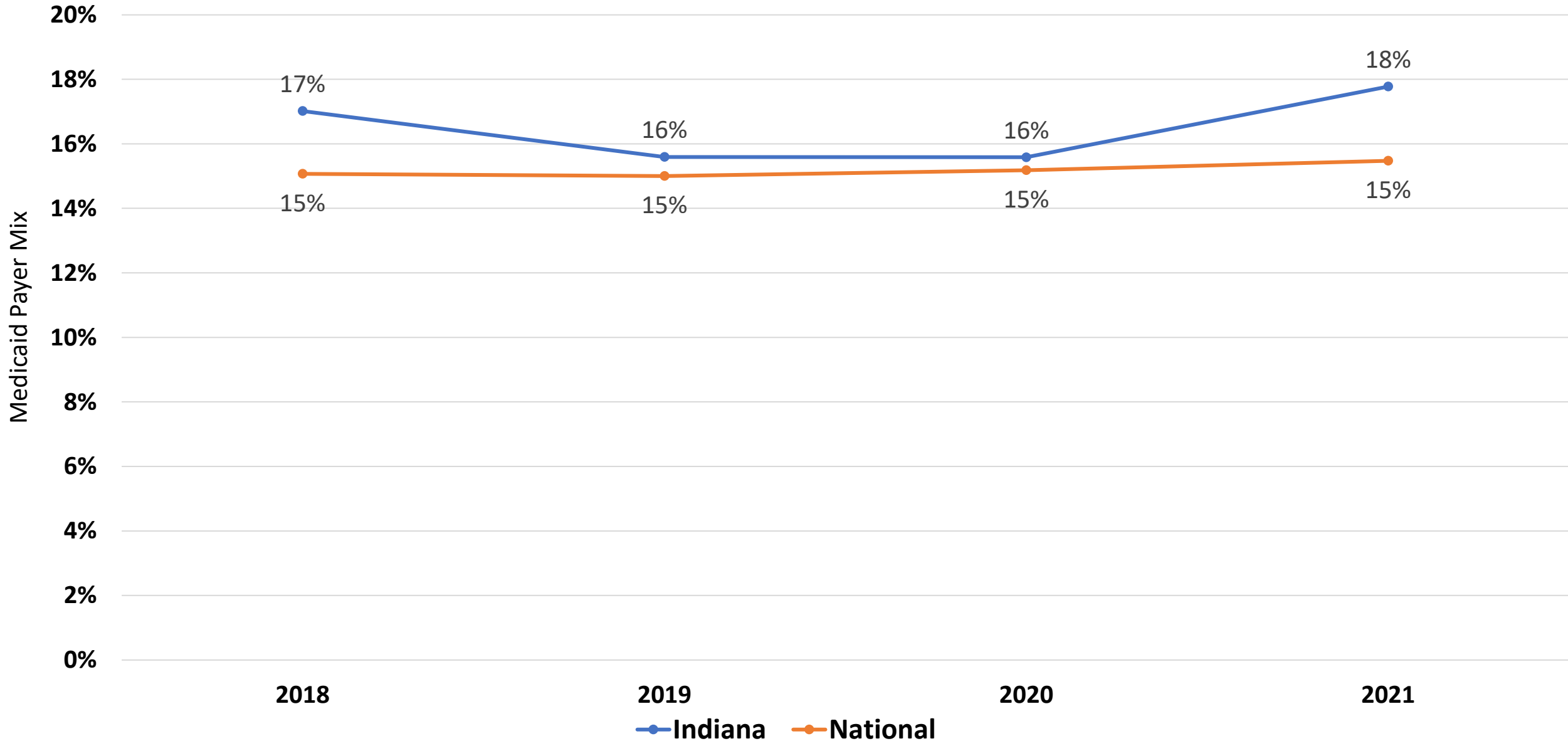
Data Source for Information in this Slide Deck is the Hospital Cost Tool

- National Academy for State Health Policy (NASHP) developed the Hospital Cost Tool (HCT) in partnership with Rice University. The HCT is a customizable, free online tool which includes hospital financial data from the federal-maintained publicly available HCRIS database. The HCRIS database houses data from hospital Medicare Cost Reports (MCR), which are financial documents prepared by, signed off, and submitted by each hospital's executive.
 - HCT was First published in April 2022 and then updated in November 2022
 - Contains 11 years of hospital financial data from 2011 – 2021 for over 4,000 U.S. hospitals
 - [Link: NASHP Hospital Cost Tool](#)
- MCR completion instructions for Medicaid payment documentation
 - “Enter the inpatient and outpatient payments received or expected for title XIX covered services delivered during this cost reporting period. Include payments for an expansion Children’s Health Insurance Program (CHIP) program that covered recipients who would have been eligible for coverage under title XIX. Include payments for all covered services except physician or other professional services, and include payments received from Medicaid managed care programs. If not separately identifiable, disproportionate share (DSH) and supplemental payments are included in this line. For these payments, report the amount received or expected for the cost reporting period, net of associated provided taxes or assessments.”
 - [CMS Hospital and Hospital Health Care Complex Cost Report](#)

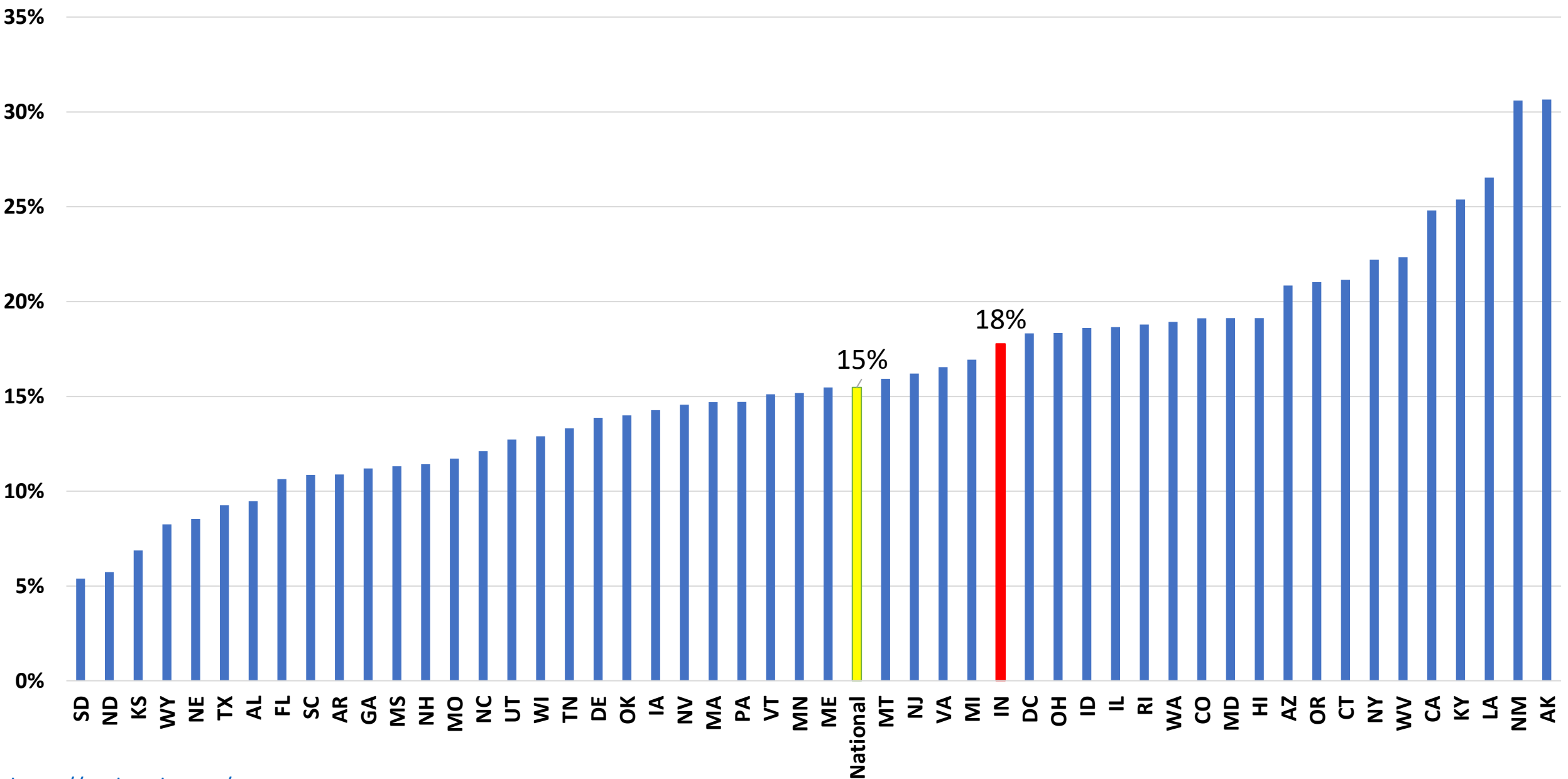
Hospital Cost Tool Definitions

- **Medicaid Payer Mix:** Percentage of total hospital services provided to Medicaid patients, as measured by Hospital Charges
 - Hospital Charges: Total inpatient and outpatient charges for services provided by the hospital, including charity care. Charges are the list prices set by the hospital, and similar to Manufacturer Suggested Retail Price in other markets.
- **Medicaid Operating Profit Margin:** Medicaid Operating Profit divided by Medicaid Net Patient Revenue
 - Medicaid Hospital Operating Profit (Loss): Medicaid Net Patient Revenue less Medicaid Patient Hospital Operating Costs
- Download the Spreadsheet and Definitions Document: <https://tool.nashp.org/>

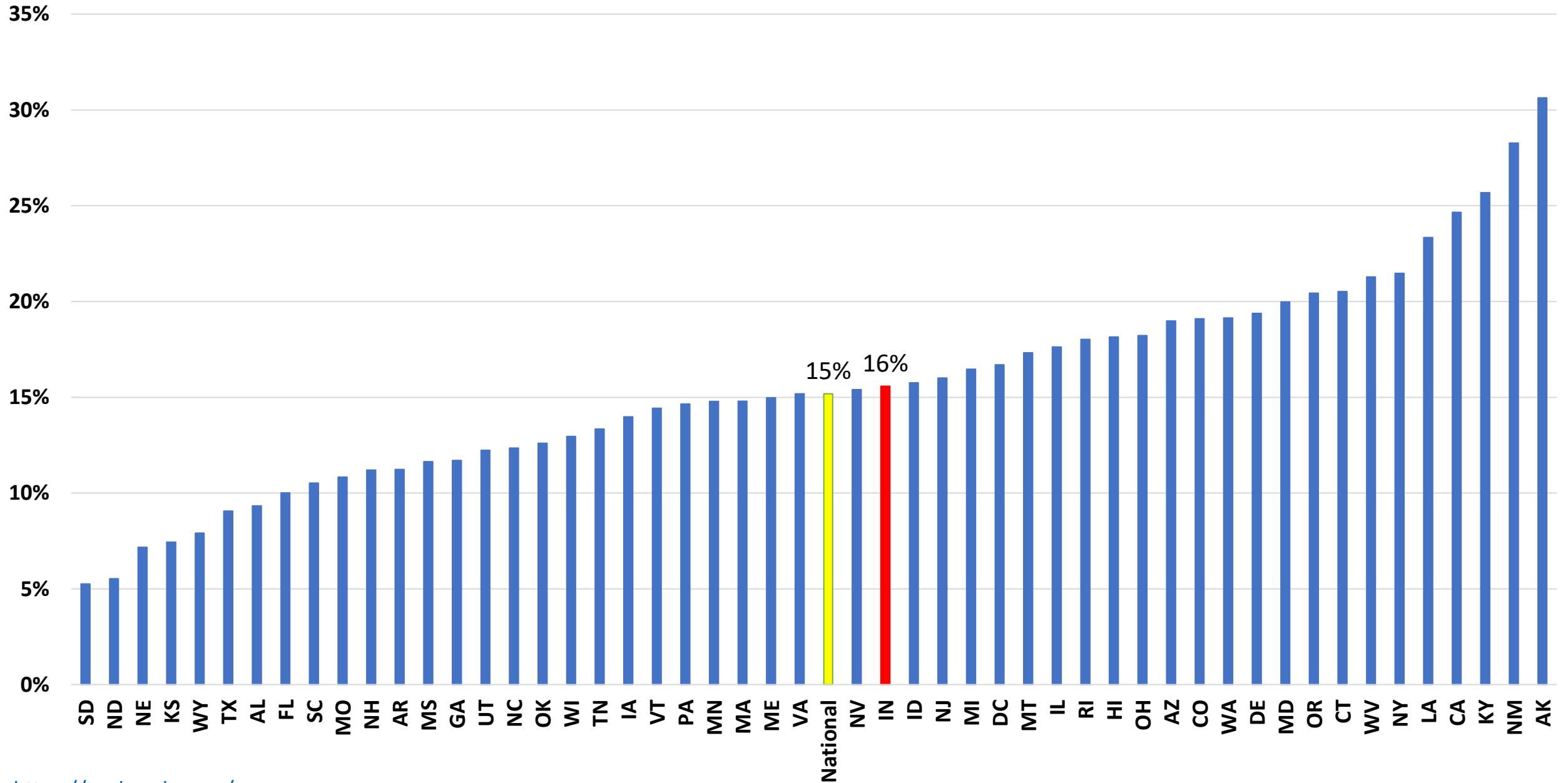
2018 – 2021 Median Hospital Medicaid Payer Mix: Indiana & National



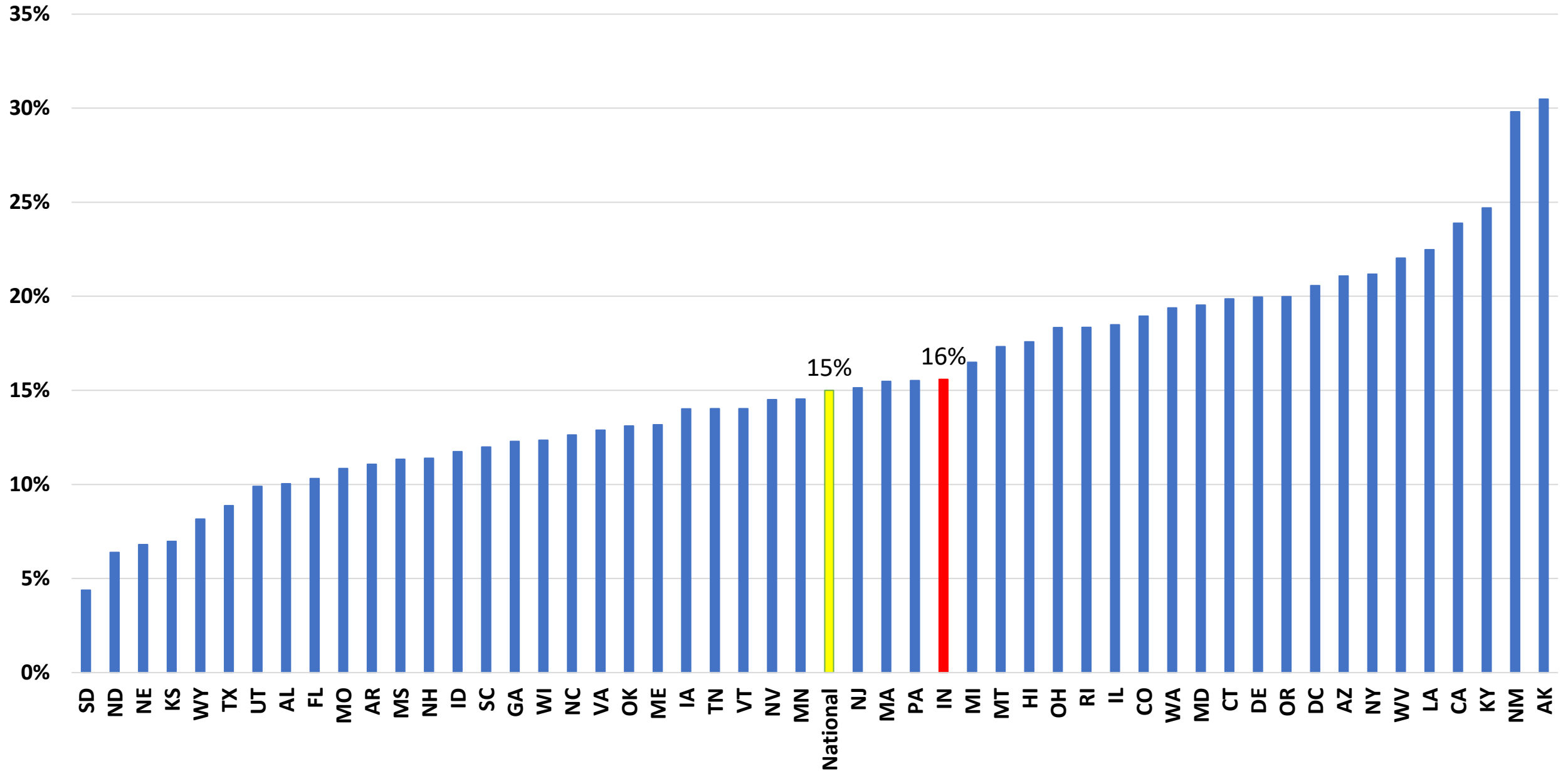
2021 Payer Mix: Indiana's Hospitals' Medicaid Median State Ranking is 20th



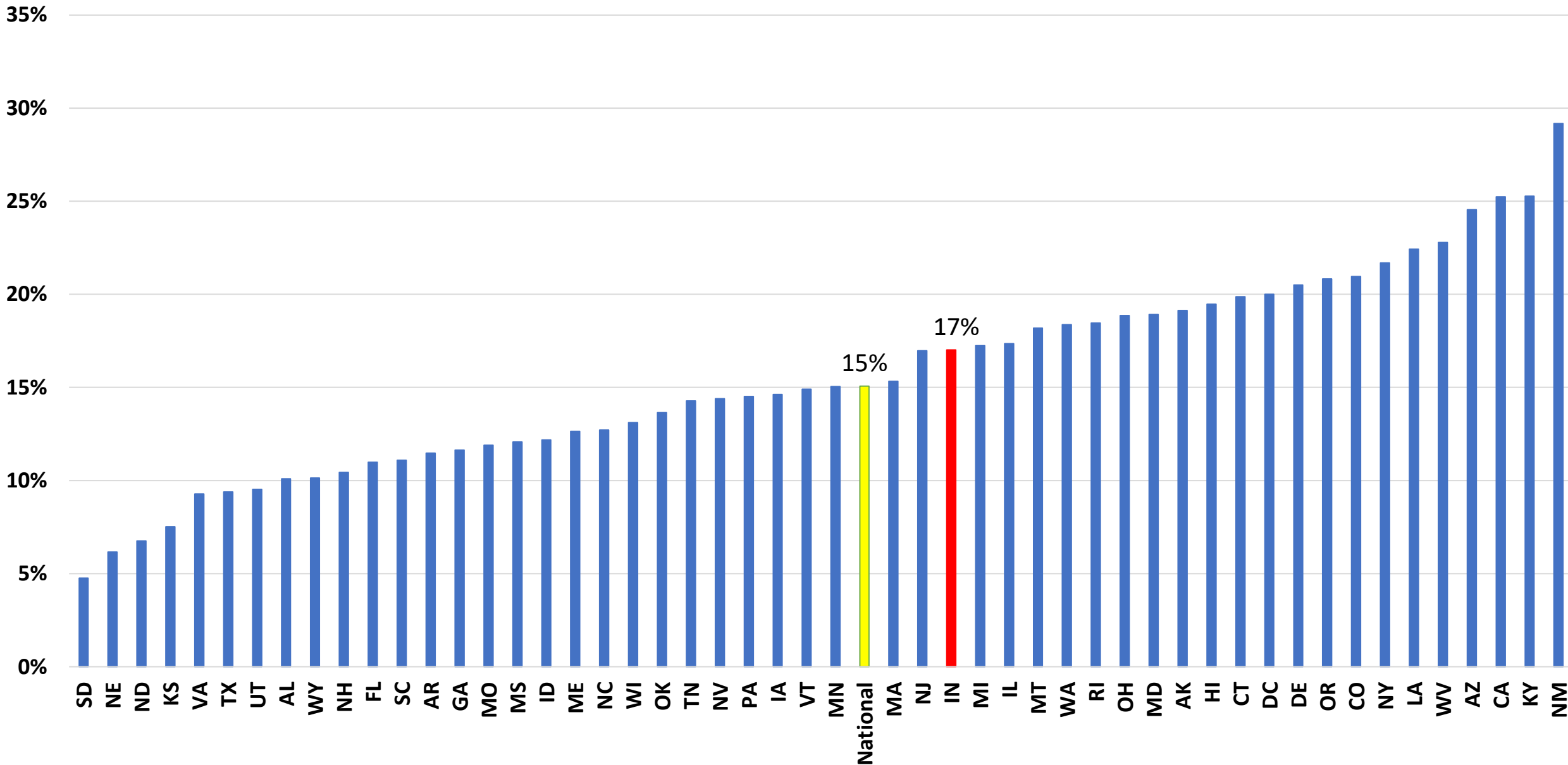
2020 Payer Mix: Indiana's Hospitals' Medicaid Median State Ranking is 24th



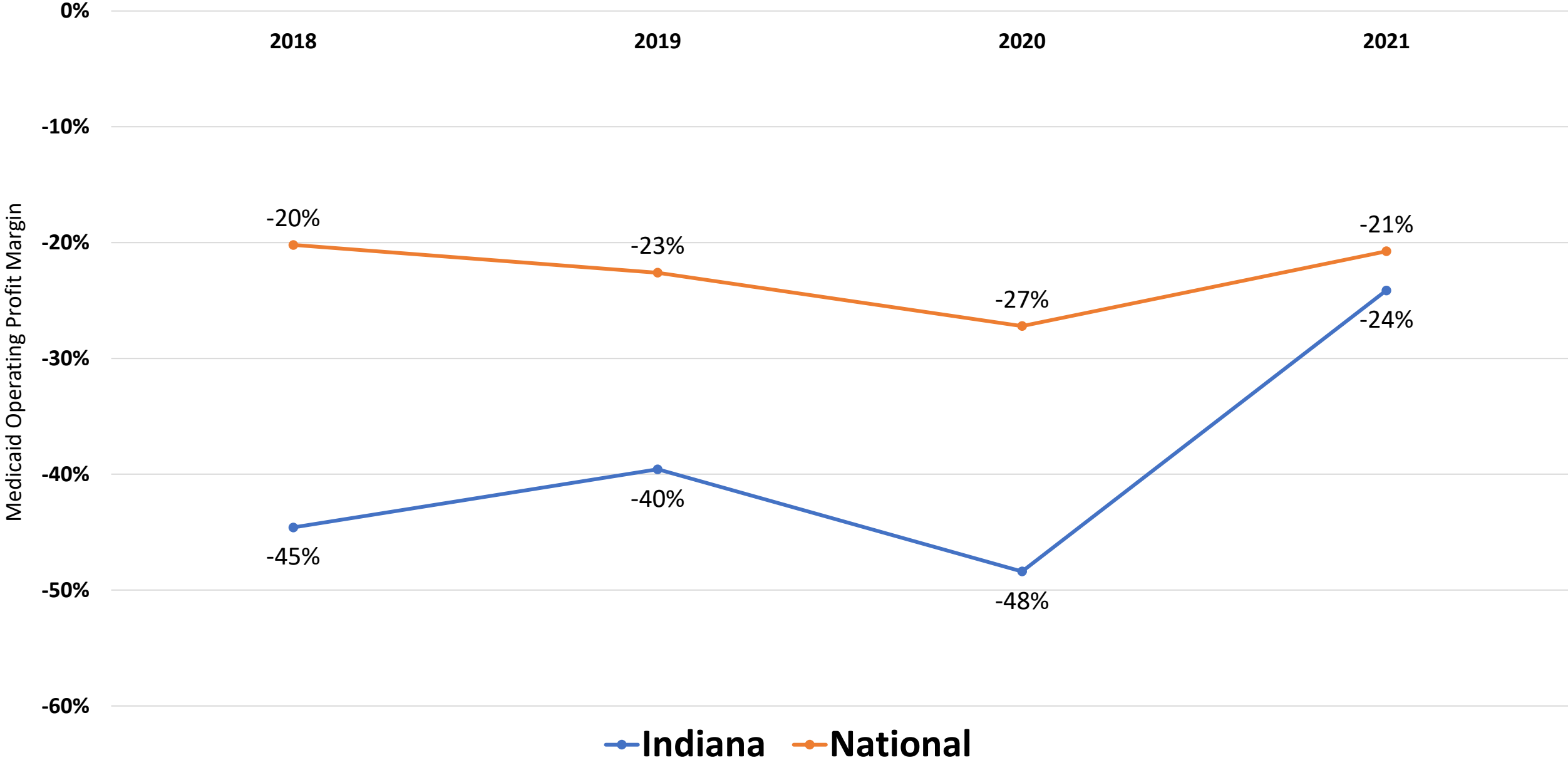
2019 Payer Mix: Indiana's Hospitals' Medicaid Median State Ranking is 22nd



2018 Payer Mix: Indiana's Hospitals' Medicaid Median State Ranking is 22nd

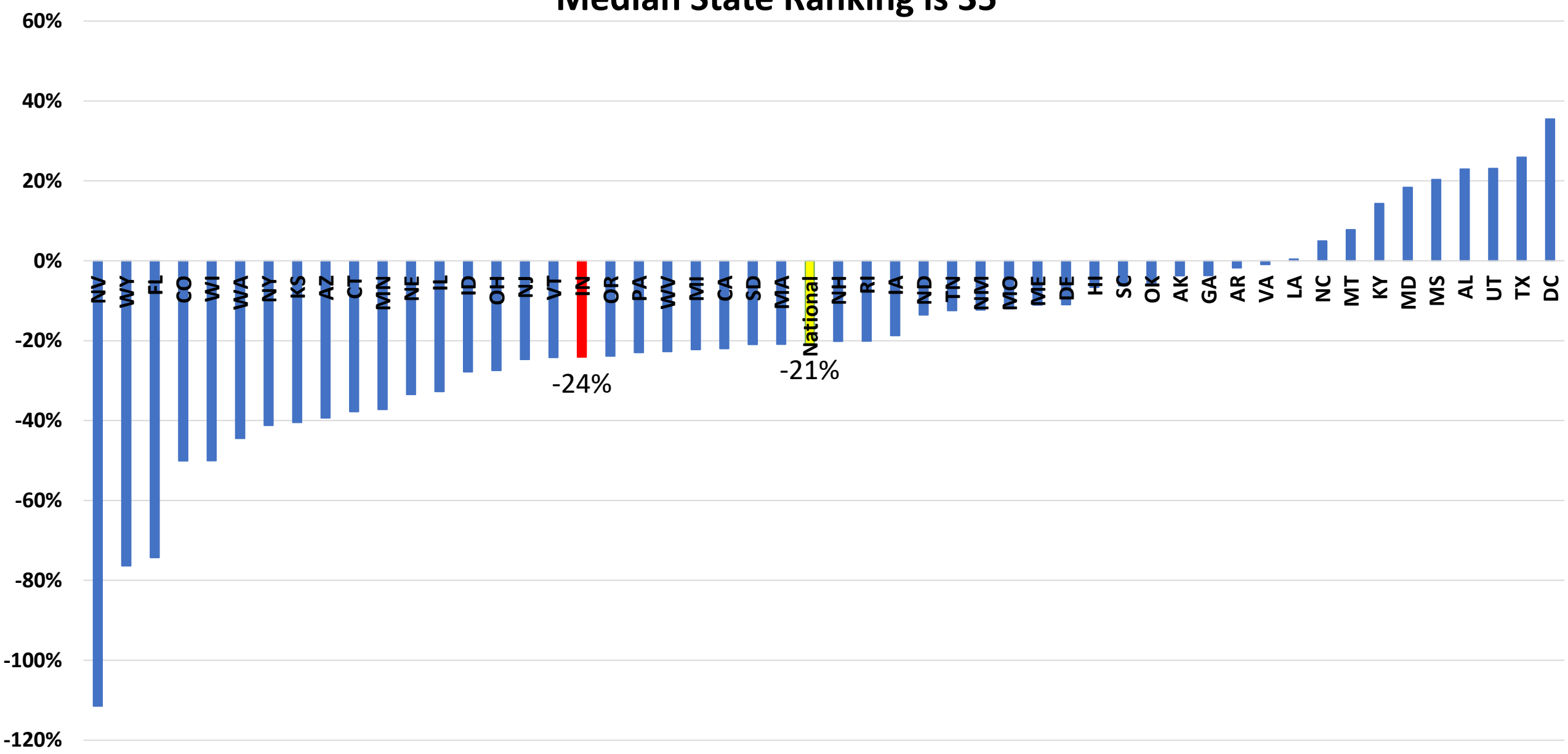


2018 – 2021 Median Hospital Medicaid Operating Profit Margin: Indiana & National



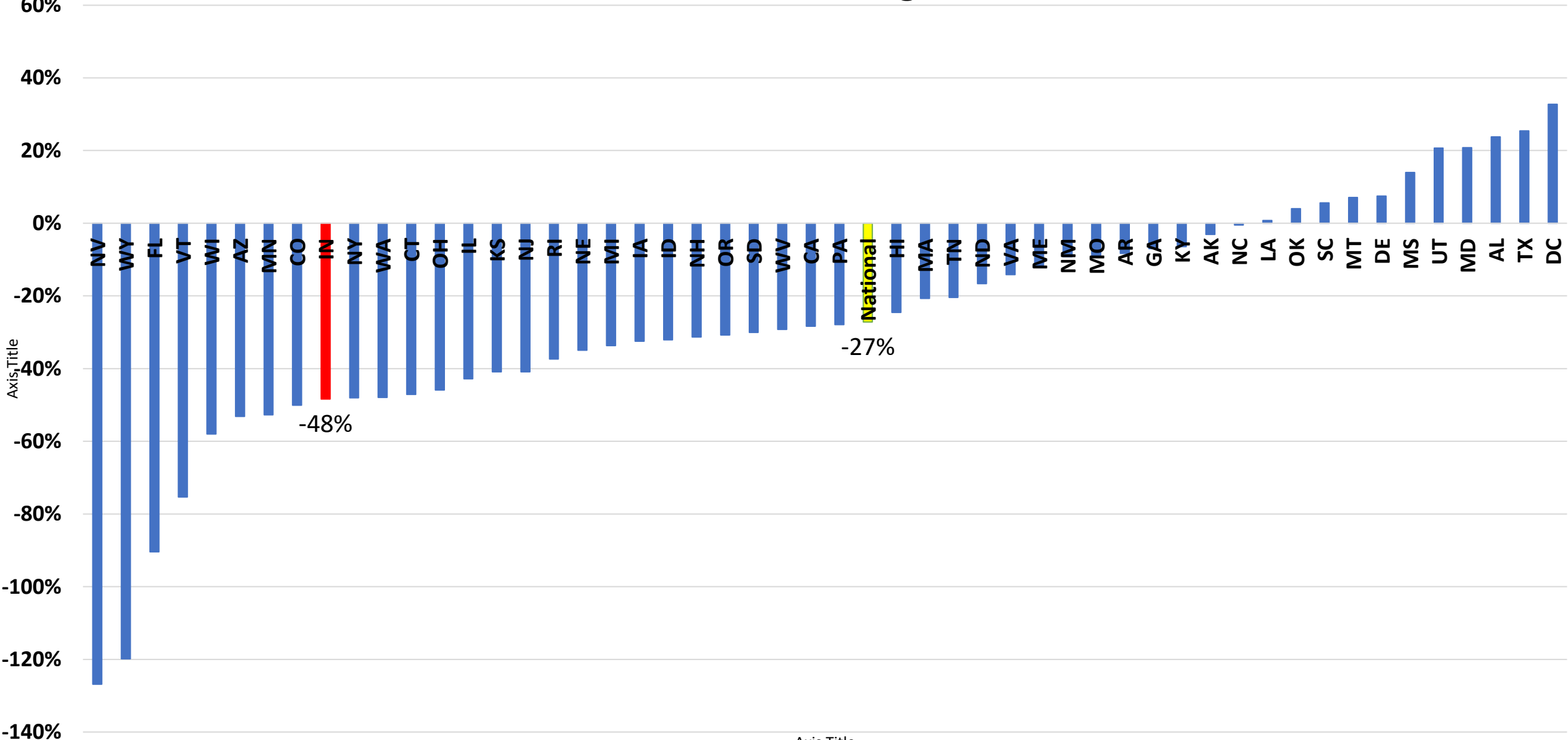
2021 Medicaid Operating Profit Margin: Indiana's Hospitals' Medicaid

Median State Ranking is 35th



2020 Medicaid Operating Profit Margin: Indiana's Hospitals' Medicaid

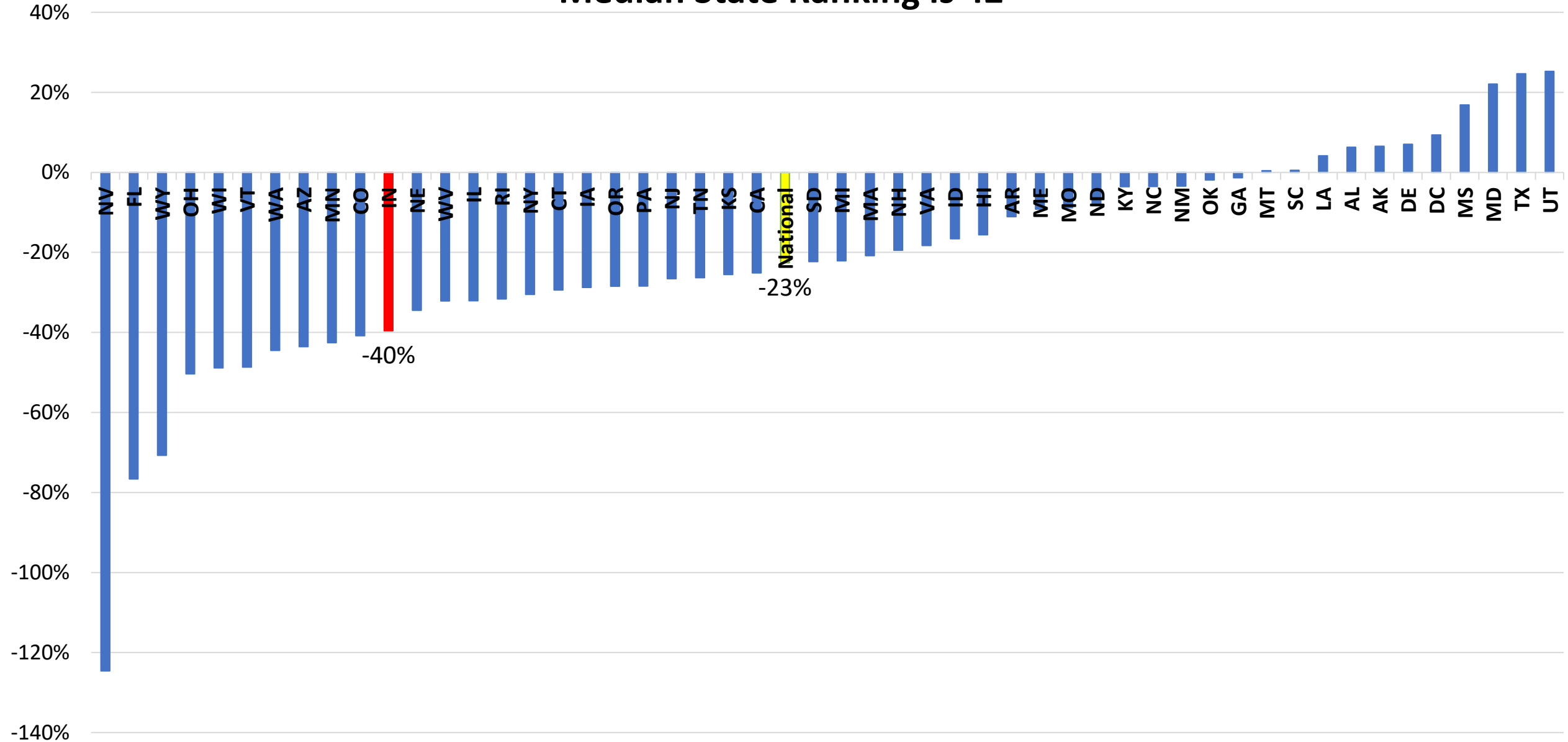
Median State Ranking is 44th



Axis Title

2019 Medicaid Operating Profit Margin: Indiana's Hospitals' Medicaid

Median State Ranking is 42nd



2018 Medicaid Operating Profit Margin: Indiana's Hospitals' Medicaid

Median State Ranking is 48th

