

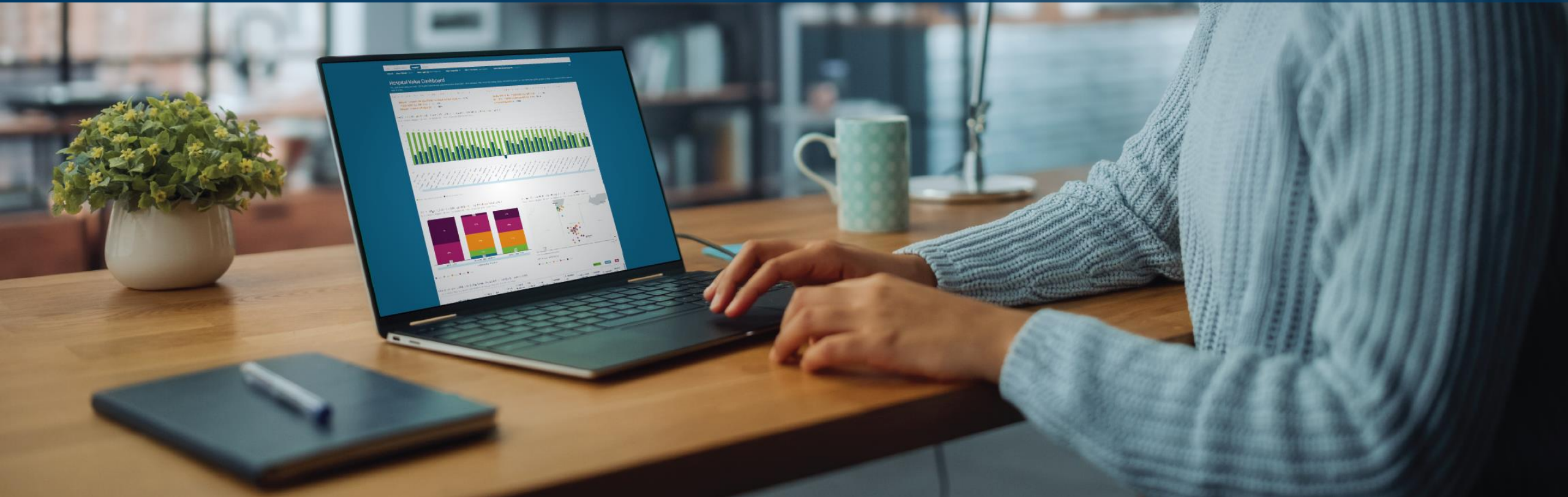
# Sage Transparency

Data to Inform Honest Conversations



 **EMPLOYERS' FORUM OF INDIANA**  
Addressing the challenges of the local healthcare marketplace

**Gloria Sachdev, BS Pharm, PharmD**  
President and CEO, Employers' Forum of Indiana  
[gloria@employersforumindiana.org](mailto:gloria@employersforumindiana.org)



# The Problem



We know wide **variation in hospital prices and quality** exists.



All of us want to go to the **best quality** at the **best price** but it is hard to wade through the data.

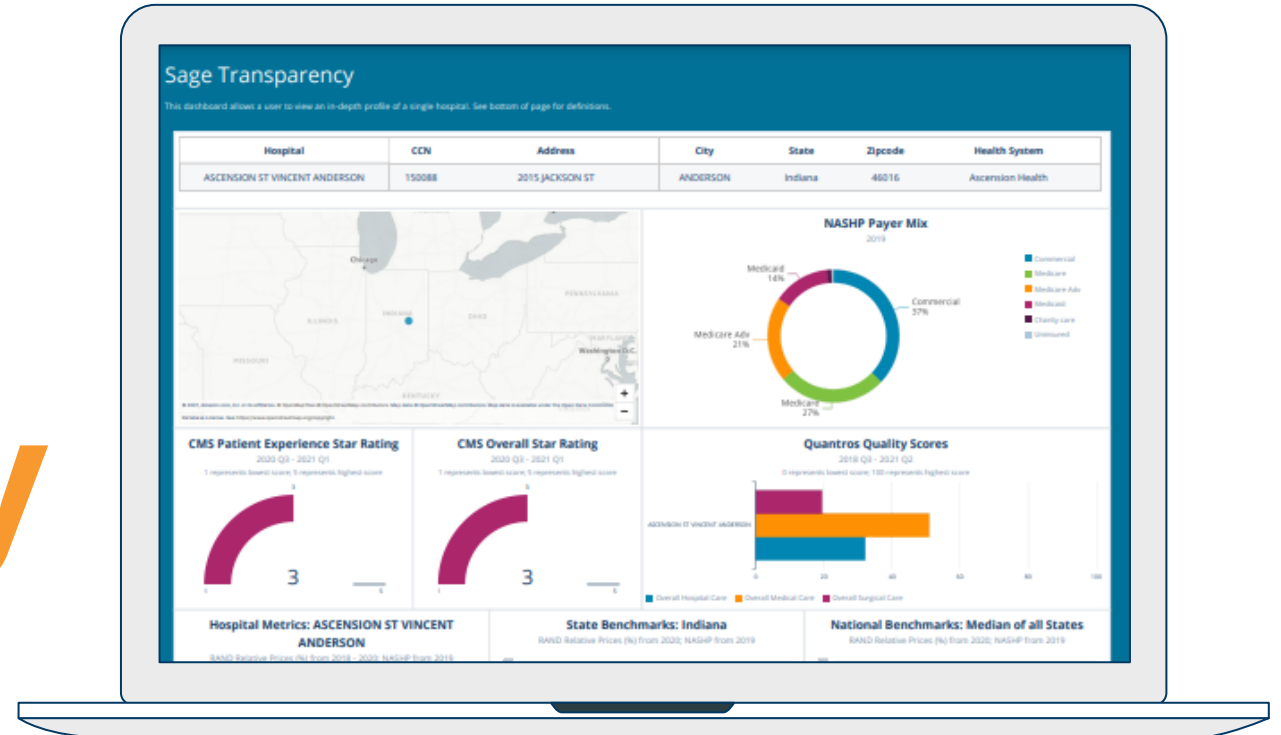


How do we make hospital price and quality information **easily accessible and useful**?



INTRODUCING

# Sage Transparency



# Sage Transparency Data Sources

## PUBLIC

### RAND 4.0

#### Prices paid by employers & insurers

Claims data from employers, insurers, and APCDs

### NASHP Hospital Cost Tool

#### Commercial breakeven price

Federal government data submitted by hospital

### CMS Hospital Star Rating

#### Quality ratings

Posted by the federal government

## PROPRIETARY

### Turquoise Health

#### Prices posted by payer

Hospitals' own websites aggregated by Turquoise Health into clinical categories

### Quantros/Healthcare Bluebook

#### Quality ratings

Determined by Quantros



# Ready for Launch!

[SageTransparency.com](https://SageTransparency.com)





# Sage Advice brought to you by ...

# Sagetransparency.com



Move between dashboards  
by selecting tabs

Reset all your selected  
filters

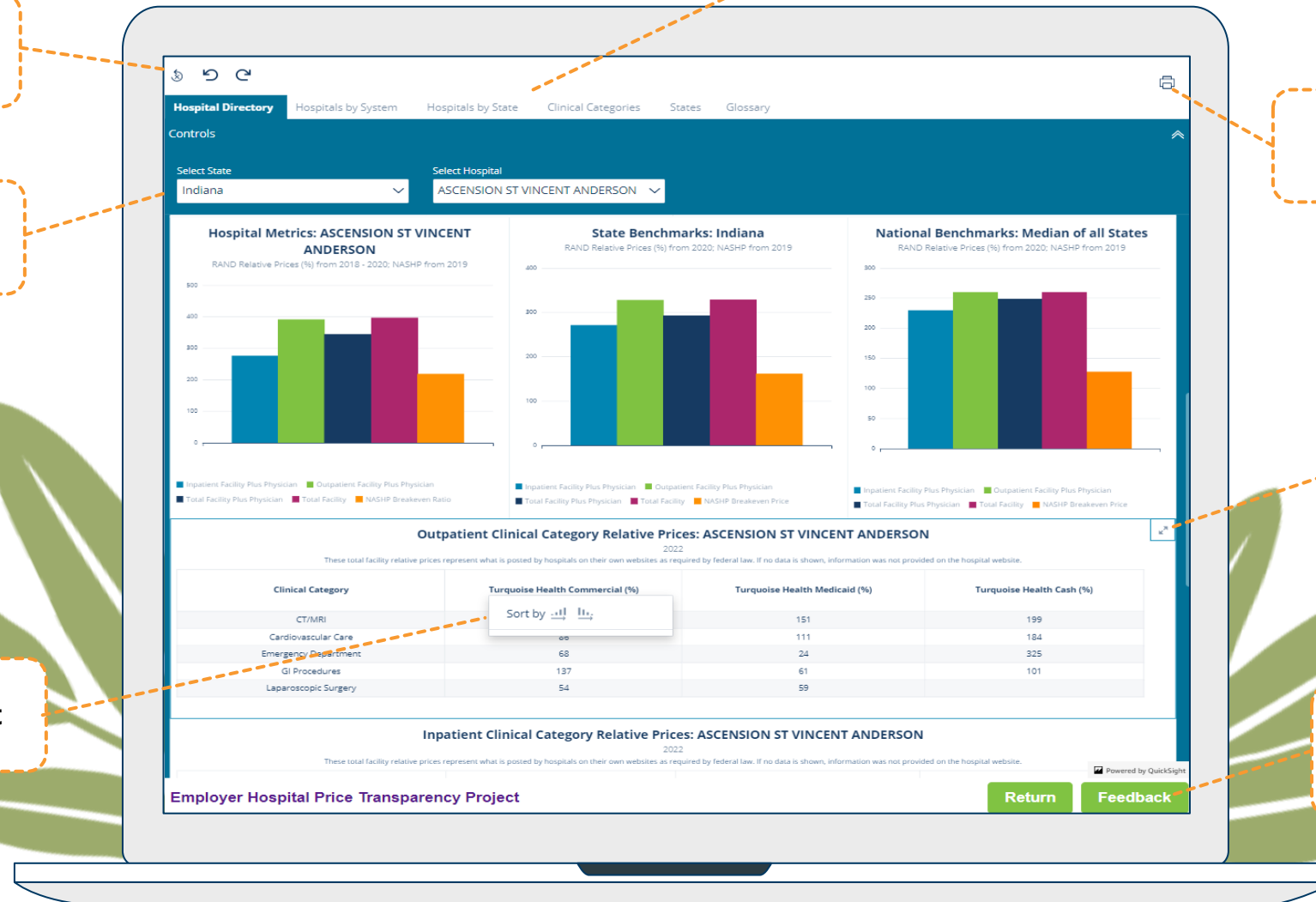
Filter using intuitive  
controls

Print or export to  
PDF

Expand the  
visualization to full  
screen

Click on title to sort

Leave feedback on  
your experience



# Disclaimer

Although the information, analysis and methodology in Sage Transparency is presented in good faith and reasonably believed to be correct at the time of publishing. The Employers' Forum of Indiana (EFI) makes no representations or warranties of any kind, expressed or implied, as to the completeness, accuracy, reliability, suitability or availability of the assessment, its conclusions, or any of the information contained herein. EFI is not responsible for and has no liability for any errors or omissions in this tool, or for any results obtained from the use of this information. Persons receiving or utilizing this tool will make their own assessment and determination as to its suitability for their own purposes prior to use. Any reliance you place on such material is therefore strictly at your own risk. EFI, its related partnerships or corporations, and the partners, agents or employees thereof, shall have no liability for any direct, indirect, incidental, special, exemplary, or consequential damages, however caused and on any theory of liability, arising out of or in any way related to the use, reliance or distribution of information and analysis presented herein. EFI reserves the right to change, delete, or otherwise modify the information and analysis herein without any prior notice. The views, information, and opinions presented in Sage Transparency are solely those of EFI staff and do not reflect the view of any specific EFI members or any other third parties. Sage Transparency is not intended to constitute legal advice.





# Sage Transparency: CMS Quality & Turquoise Health Price Data will be Updated Quarterly

## Feedback Welcome!



# What is on the Horizon

1. Add RAND 4.0 **Ambulatory Surgical Center (ASC)** data
2. Add national insurance data regarding **provider negotiated prices** (when available and cleaned up)
3. Develop a **private dashboard** for Forum members to request customizable reports
4. Develop **quality measures** organized by clinical categories



Special Thank You to



**Arnold  
Ventures**

For their generous support in the development of Sage Transparency



Special thank you to the EFI team and our  
IT developer, Mathematica!



**Andrew Hurwitz**



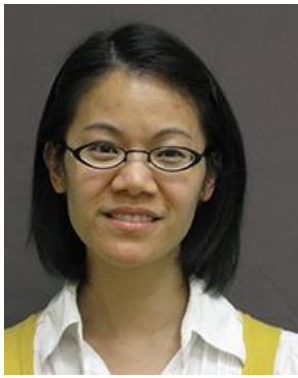
**Area Director**

**Guru Rasukonda**



**Project Director**

**Kayshin Chan**



**SME**

**Shruthi Ramesh**



**Developer**

**Molly Bair**



**Developer**

**Brian Hunscher**



**Tech Lead**

